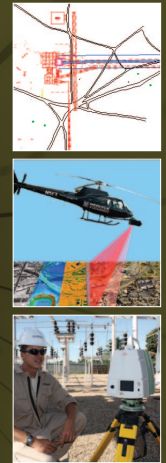




When Accuracy Counts



ENERGY TRANSMISSION

For more information, please contact:

Torin Haskell, GISP
Business Development Director

Direct: 303-353-3610 / *Cell:* 719-200-6215 / torin.haskell@merrick.com

Gary Outlaw, GISP
Vice President

Direct: 303-353-3901 / *Cell:* 303-520-4719 / gary.outlaw@merrick.com

Engineering

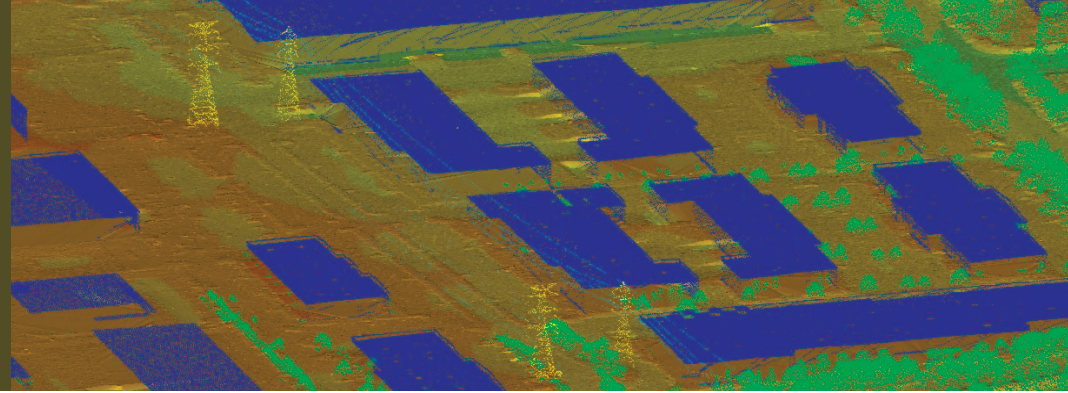
Architecture

Design-Build

Surveying

GeoSpatial Solutions





OVERVIEW

OFFICE LOCATIONS

- Colorado
- Georgia
- New Mexico
- Tennessee
- Texas
- Canada
- Mexico

Since its founding in 1955, Merrick & Company has been a pioneer in advanced mapping technologies, services, and products. As a leader in light detection and ranging (LiDAR) and digital imagery to terrestrial scanning, hyperspectral imagery, and multi-sensor data fusion, Merrick is continually recognized for outstanding client service, product quality, and innovation.

ENERGY TRANSMISSION

Merrick's full-service geospatial solutions team meets the planning, acquisition, mapping, documentation, and application needs of transmission line owners, operators, and stakeholders.

RESOURCES

Merrick maintains a fleet of both fixed-wing aircraft and helicopter platforms equipped with advanced remote sensing equipment. Additionally, the firm owns and operates the latest in survey equipment including GPS receivers and total stations.

MULTI-SENSOR SOLUTIONS

Merrick's innovative approach to co-mounting multiple sensors (e.g., LiDAR, hyperspectral, high-resolution oblique and nadir imagery, geo-encoded motion video, and meteorological data) on a single airborne platform provides for robust, simultaneous, and cost effective data acquisitions. Merrick has a proven track record of successfully utilizing and merging appropriate remote sensing technologies into customized geospatial solutions.

Beginning-to-end services are what you'll experience with Merrick. The firm provides project planning, multi-sensor data acquisition, and data processing and integration - all supported by advanced technical resources and personal client service.

SERVICES

- LiDAR
- Terrestrial scanning
- Surveying
- Hyperspectral imagery
- Ortho imagery
- Multi-sensor data fusion
- Oblique imagery
- Airborne video
- Meteorological data
- MARS® software

PROVIDING TURN-KEY SOLUTIONS FOR

- Transmission line rating/uprating surveys
- As-built transmission & substation surveys
- PLS-CADD models
- Route surveying
- Design & land base mapping
- Vegetation management/danger zone encroachment
- Enterprise land base consolidation/consulting

CORPORATE OVERVIEW

Merrick & Company, an employee-owned geospatial solutions, surveying, engineering, architecture, and design-build firm, serves domestic and international clients in the geospatial/mapping, infrastructure, security, energy, and life sciences markets. Merrick maintains eight offices in the US as well as offices in Canada and Mexico.

Merrick - When accuracy counts

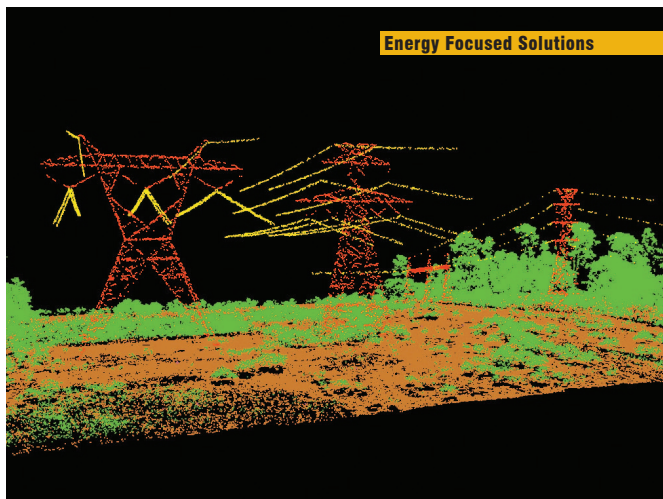
Fixed-Wing Aircraft



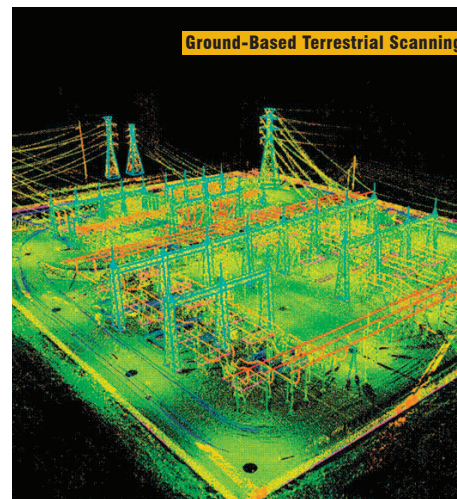
Helicopter Platform



Energy Focused Solutions



Ground-Based Terrestrial Scanning



Transmission Asset Mapping

