

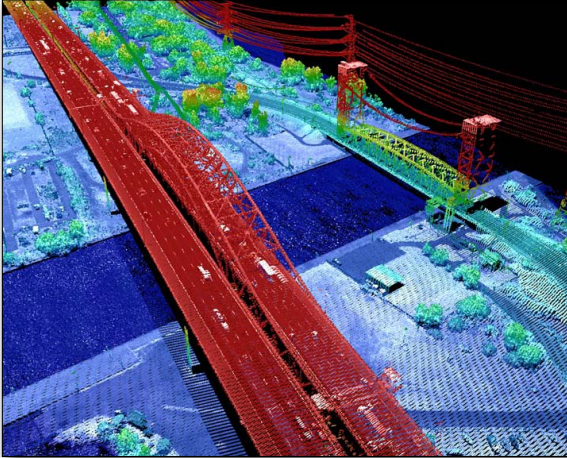
MARS®

MERRICK ADVANCED REMOTE SENSING SOFTWARE

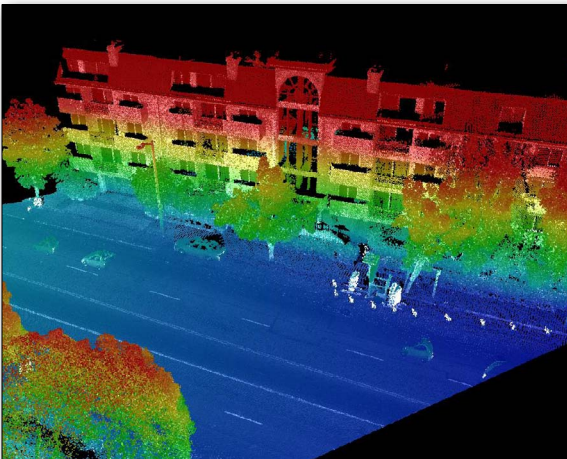


MERRICK®

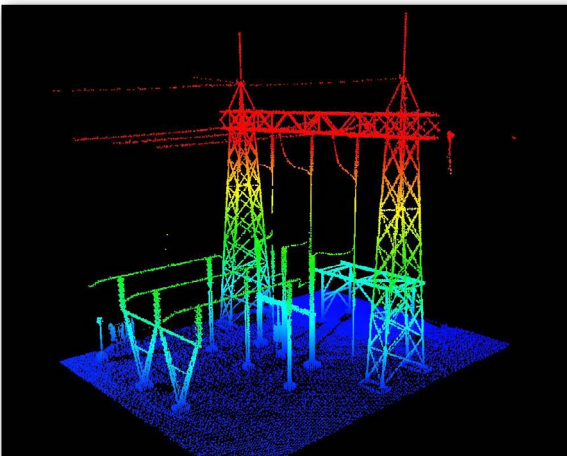
MARS® Merrick Advanced
Remote Sensing Software



Airborne LiDAR – Urban Area



Mobile LiDAR – Street Corridor



Terrestrial LiDAR – Electric Substation

MARS® PRODUCT DESCRIPTION

Merrick & Company is pleased to announce the release of Version 7.0 MARS®! MARS® is a comprehensive, production-grade Windows application designed to visualize, manage, process and analyze LiDAR point cloud data.

The newest version of MARS® is optimized for 64-bit operating systems and offers users a wide range of powerful LiDAR filtering, editing, and analysis toolsets. Version 7.0 includes a robust LiDAR data quality control (QC) module, 26 data filtering algorithms, enhanced data visualization capabilities, and a new breakline compilation toolset.

MARS® PRODUCT SUITE

MARS® FreeView™

- Free viewing application supports basic LiDAR data navigation and 3D visualization - the perfect tool for casual users (300 MB file size limitation).

MARS® Viewer™

- Provides same functionality as the free viewer, but with unlimited data loading capacity. Designed to support read-only enterprise users and priced for affordability! Sold individually or in a bundle of ten (10) licenses.

MARS® Explorer

- Robust commercial version of the MARS® software suite featuring support for 64-bit data processing, LiDAR data classification, QC tools, and enhanced visualization capabilities.

MARS® Production

- Production-grade version of the MARS® software suite. Extensions provide additional functionality for breakline compilation and data analysis tasks.

MARS® QC Module

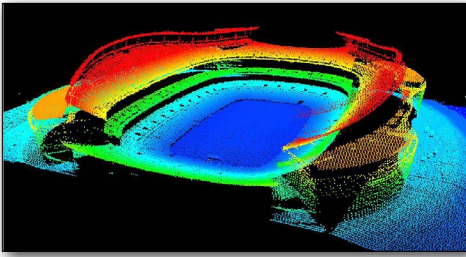
- Automated LiDAR data quality control (QC) tool for verifying compliance to the v13 USGS LiDAR Specification. QC report is outputted in PDF format.

MARS® PRICING

- | | |
|-----------------------------|--|
| • MARS® FreeView™ | Free |
| • MARS® Explorer Evaluation | Free |
| • MARS® Viewer | \$795 each / \$995 (bundle of 10 licenses) |
| • MARS® Explorer | \$2,995 |
| • MARS® Production | \$11,995 |
| • MARS® QC Module | \$2,495 |

Software pricing includes one (1) year of technical support and product upgrades. The annual software maintenance fee is 18% of the list price at the time of purchase, regardless of discount. Academic and volume discounts available. All prices are in U.S. Dollars.





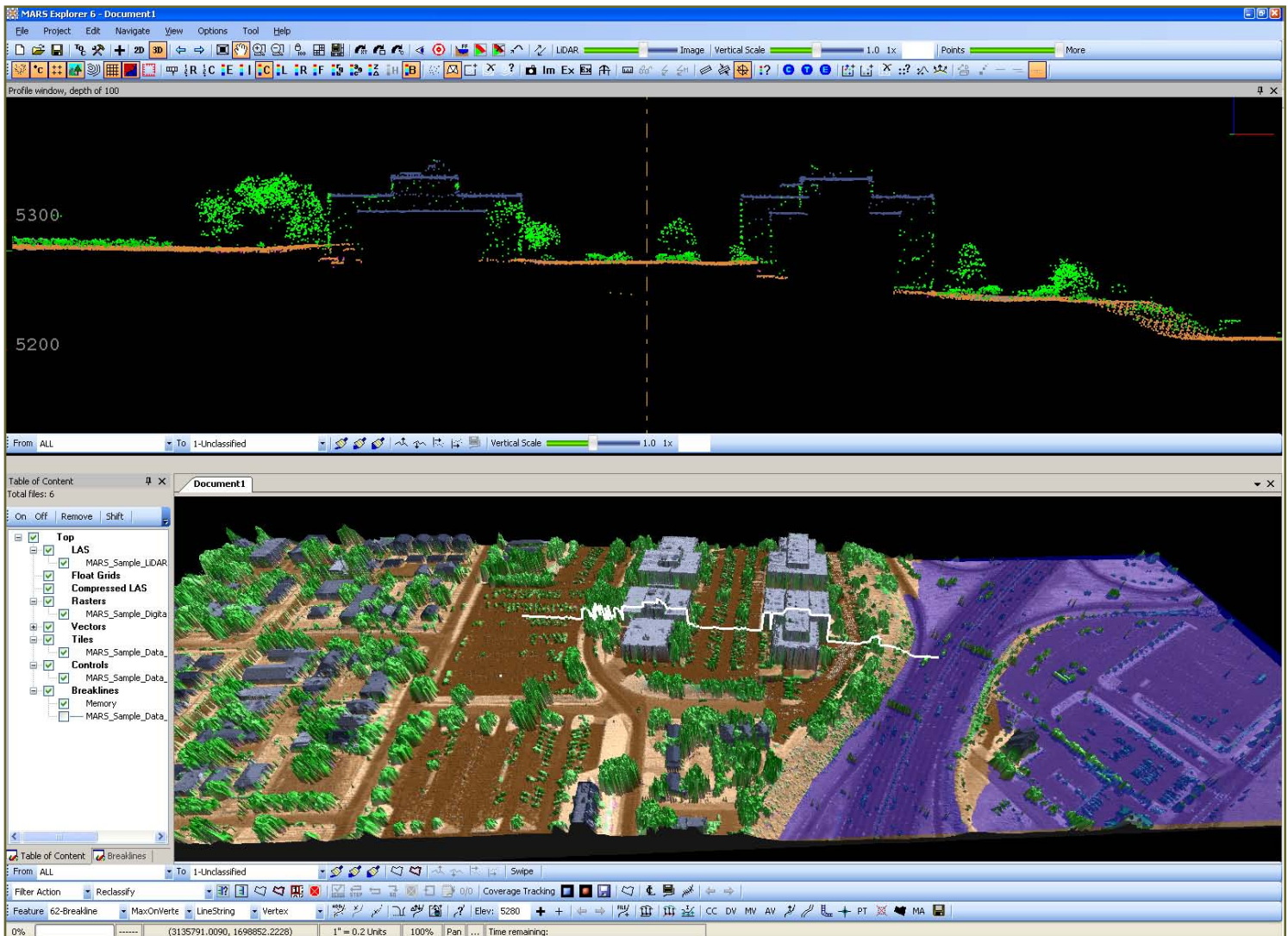
MARS® SALES CONTACT

Bill Emison
 MARS® Product Manager
 303-353-3634
 MARSsales@merrick.com
 www.merrick.com/MARS

APPLICATION FEATURES

- Unlimited data loading capacity for airborne, terrestrial, and mobile LiDAR datasets
- 64-bit support for all Windows operating systems
- Capable of loading LiDAR (LAS), imagery (RGB & hyperspectral) and GIS vectors
- Automated LiDAR QC module provides USGS compliance reporting
- Batch generate DEMs and elevation contours
- Automated & manual LiDAR filtering tools
- Allows multi-processing for more efficient use of PC hardware
- 3D coordinate transformation support for LAS files (horizontal & vertical!)
- New flood inundation modeling capabilities
- Free, 30-day evaluation download available from website

Please visit <http://bit.ly/6ZuqAs> for additional MARS® product information.



MARS® Explorer User Interface